

WINDOW SCREENS

We custom manufacture a wide range of Flyscreen and Security^ Windows to meet your individual needs.

- * FLYSCREENS
- * KIDSCREEN WINDOW FALL PREVENTION SCREENS
- * MAGNETIC INSECT SCREENS
- * DIAMOND GRILLE WINDOW SCREENS
- * INVISI-GARD SECURITY^ SCREENS
- * INVISI-SCAPE EMERGENCY ESCAPE SECURITY^ SCREENS
- * MESH OPTIONS
- * COLOURS
- * ATTACHMENTS

WINDOW SCREENS

FLYSCREENS

Our most popular window screens are the perfect solution to allow natural ventilation while keeping leaves, debris and insects out, especially during windy days or at night when insects are attracted to light.

Flyscreen windows can assist in reducing your energy bills with natural air-flow, rather than artificial cooling. They are particularly useful when 'evaporative cooling' is installed (which, unlike refrigerated air-conditioning, requires the windows to be open to work).

STANDARD

All Window Flyscreens come in a variety of standard colours and include appropriate attachment accessories (ie. Plunger pins or Swivel Clips etc)

OPTIONAL

UPGRADES to alternative mesh types, special colours, heavy duty 37mm frame (for larger windows) or customised attachment accessories/system for unique window types.



- ✓ **AFFORDABLE**
- ✓ **CONVENIENT**
Typically easy to remove from the window to clean glass. Easy and inexpensive to repair
- ✓ **VISIBILITY**
Will not obstruct view through glass. Fibreglass mesh is flexible and able to be pulled tight across frame to ensure no wrinkles. Being fabric based it will also not kink or dent
- ✗ **PET/CHILD DURABILITY**
mesh is relatively easy to push through or tear

Frame:
Aluminium
25mm x 11mm
(or 25mm x 9mm if required)

Standard Mesh:
Standard Fibreglass

Security^ Rating:
////

Strength rating:
////

KIDSCREEN WINDOW FALL PREVENTION SCREENS

We are a licensed fabricator and installer of this unique window screen system. Designed for upstairs windows where there is a potential safety risk for children falling.

Existing Australian Building codes require risks for upstairs bedroom windows to be minimised by restricting the opening of a window (to maximum of 125mm) – however this does limit airflow.

Fitting these screens to your upstairs windows is a great way to get the maximum benefits of window airflow with peace of mind that your family is safe.

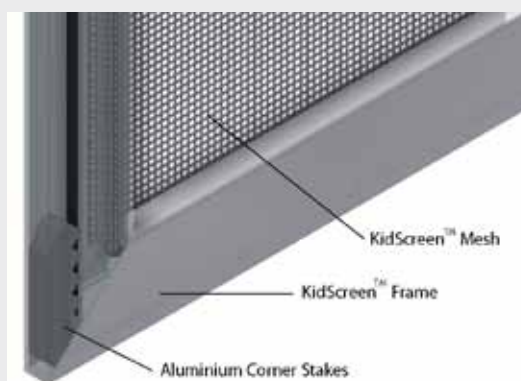
The KidScreen Window Fall Prevention screen offer a 7 year conditional warranty when fitted and installed by a licensed or certified installer.

All KidScreen Window Fall Prevention screens are made to measure and custom built to meet the exact requirement of

the National Construction Code 2013 (Vol 1: D.2.24 & Vol 2: 3.9.2.5) ensuring that your children are in the safest possible environment.

The KidScreen Window Fall Prevention screens have undergone successful testing to the Australian Window Association Industry Code of Practice ICP.005 exceeding the minimum 250N force (25kg) required in the National Construction Code 2013 (Vol 1: D.2.24 & Vol 2: 3.9.2.5).

Intended for kids up to age 5 and/or 25kg.



- ✓ **PEACE OF MIND**
- ✓ **VISIBILITY**
Similar to a regular flyscreen - mesh will not obstruct view
- ✓ **DURABILITY**
Heavy reinforced polyester material that gains its strength from its woven assembly. Corrosion Resistant
- ✓ **PET FRIENDLY**
Suited to windows where pet's claws are an issue
- ✓ **INDUSTRY STANDARDS**
Meets government requirements for building standards in areas with Bushfire Attack Level (BAL) Ratings up to 40
- ✓ **COST**
More expensive regular flyscreens.

Technical Details:
PVC coated heavy gauge polyester mesh attached to 44mm frame with durable high strength attachment.

Security^ Rating:
////

Strength Rating:
////

WINDOW SCREENS

MAGNETIC INSECT SCREENS

Designed for odd shaped windows or those constructed in a way that a traditional screen would inhibit access to open/close easily. Commonly used on all types of outward opening and double-hung windows.

Can be fitted to timber, steel, aluminium and UPVC window frames.

STANDARD

Available in 9 frame colours.

OPTIONAL UPGRADES to alternative mesh types (Micro Weave or Privacy mesh only) or special colours.



- ✓ **VISIBILITY**
Mesh will not obstruct view
- ✓ **CONVENIENT**
Easy to remove to clean the glass or open a window
- ✗ **PET/CHILD DURABILITY**
Mesh is relatively easy to push through (though optional upgrades to different mesh types available)
- ✗ **COST**
Much more expensive than regular flyscreens.

Frame:

Custom Made 12mm PVC frame bonded to Magnetic strip with corresponding base magnet fitted to the inside of the window.

Standard Mesh:

Standard Fibreglass bonded under pressure to magnet.

Security[^] Rating:

//////

Strength rating:

//////

DIAMOND GRILLE WINDOW SECURITY[^]SCREENS

Ideal for areas where security is a concern (laneway windows, commercial premises etc) and cost is a consideration.

Our Diamond Grille window screens utilise the same technology as our Diamond Grille doors with a smaller outer frame. The frame uses sturdy internal metal corners which are riveted in.

These screens are fixed to the window frame (either inside or outside depending on your preference) Attached with tamper-proof screws but can be removed with a custom shaped allen key.

STANDARD

All Diamond Grille window screens come in our standard colours using A127 grille and include appropriate attachment accessories to affix securely.

OPTIONAL UPGRADES to alternative mesh types, 3 different grille patterns or special colours.

Galvanised or ALU-GARD grille/mesh also available.



- ✓ **RANGE**
Standard colours available. One standard, three alternative diamond grille patterns to choose from
- ✗ **CONVENIENCE**
Permanently attached, difficult for cleaning glass
- ✗ **SAFETY**
Permanently attached, difficult to remove in case of emergency
- ✗ **VISIBILITY**
Diamond Grille obstructs view in and out of window.
- ✗ **PET/CHILD DURABILITY**
Mesh is relatively easy to push through (though optional upgrades to different mesh types available)

Frame:

Aluminium
37mm x 11mm

Standard Mesh:

Standard Fibreglass

Security[^] rating:

//////

Strength rating:

//////

WINDOW SCREENS

INVISI-GARD SECURITY^ SCREENS

INVISI-GARD Fixed Window Security^ Screens combine the proven strength and security^ of **316 Marine Grade Stainless Steel Mesh** with extruded aluminium perimeter framing to create a security^ window screen that looks great whilst providing excellent security^. Ideal for laneway windows, commercial premises etc.

INVISI-GARD mesh provides a clear view in both directions through the window. With no grille to obstruct view. Black mesh absorbs the light making easier to see through.

High strength mesh and unique construction method provide ultimate durability and strength which is also highly resistant to corrosion.

INVISI-GARD 316 Marine Grade Stainless Steel Mesh is covered by a 15 Year conditional Warranty.



All INVISI-GARD window screens come in a variety of standard colours and include appropriate attachment accessories to affix securely.

Optional upgrades to special colours

- ✓ **VISIBILITY**
No grille to obstruct view
- ✓ **DURABILITY**
High strength mesh and unique construction
- ✓ **SECURITY**
Classified as a Security Window by Australian Standards
- ✓ **INDUSTRY STANDARDS**
Meets government requirements for building standards in areas with Bushfire Attack Level (BAL) Ratings up to 40
- ✗ **CONVENIENCE**
Permanently attached, difficult for cleaning glass
- ✗ **SAFETY**
Permanently attached, difficult to remove in case of emergency
- ✗ **COST**
More expensive regular flyscreens or Diamond Grille.

Technical Details:
Aluminium frame fitted with 316 Marine Grade Stainless Steel Mesh. Attached using Invisi-Gard patented pressure retention system for maximum security.

Standard Mesh:
0.8mm Stainless Steel Wire, 11 x 11 strands per 25mm sq.

Security^ Rating:

//////

Strength rating:

//////

WINDOW SCREENS

INVISI-SCAPE EMERGENCY ESCAPE WINDOW SECURITY^ SCREENS

From the makers of **INVISI-GARD** Doors and Windows these screens offer the perfect answer to your security^ and safety needs.

The impact tested **316 Marine grade stainless steel** ensures the external security^ of the building is not compromised and an easy to operate release on the inside allows exit from the building freely in case of an emergency.

INVISI-SCAPE Emergency Escape Window Security^ Screens provide simple, keyless, one handed unlocking of the window security^ screen from the inside. Once unlocked, the security^ screen then hinges open to allow a path of escape.

High strength mesh and unique construction method provide ultimate durability and strength which is also highly resistant to corrosion.

INVISI-GARD 316 Marine Grade Stainless Steel Mesh is covered by a 15 Year conditional Warranty.



- ✓ **SAFETY & SECURITY**
allows for one-hand unlocking of the window from the inside whilst not compromising security from the outside
- ✓ **DESIGN**
Fitted to perimeter frame only (no grille required).
- ✓ **VISIBILITY**
no grille to obstruct view. mesh absorbs the light making easier to see through.
- ✓ **DURABILITY**
High strength mesh and unique construction method provide ultimate durability and strength.
- ✓ **HIGHLY RESISTANT TO CORROSION.**
- ✓ **VERSATILE.**
Can be custom manufactured to open inwards, or outwards to fit many brands and styles of window
- ✓ **SUITABLE FOR BUSHFIRE ZONES**
Suits applications up to Bushfire Attack Level BAL40
- ✗ **COST**
More expensive regular fixed INVISI-GARD screens.
- ✗ **KIDSAFE**
Designed to be opened easily from the inside so does not provide protection for kids falling from upstairs windows.

Technical Details:

Aluminium frame fitted with 316 Marine Grade Stainless Steel Mesh. Attached using Invisi-Gard patented pressure retention system for maximum security.

Security^ Rating:

//////

Strength rating:

//////

All INVISI-SCAPE Emergency Escape Window Security Screens have been tested to Australian Standards AS5039-2008

PRIVACY SCREENS

Custom made privacy screens available on request.



RETRACTABLES

A range of retractable window screens are available on request depending on your style of window.



Bulleenscreens
made for the trade

WINDOW SCREENS MESH OPTIONS

All our window screens come with an appropriate insect mesh already fitted. We have plenty of alternative meshes available as an upgrade to suit your particular needs.

MESH OPTIONS

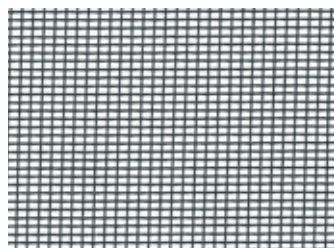
All our window screens come with an appropriate insect mesh already fitted. We have plenty of alternative meshes available as an upgrade to our flyscreen of Diamond Grille or Magnetic Screen to suit your particular needs.

FABRIC MESH TYPES	REASON TO CHOOSE	METAL MESH TYPES	REASON TO CHOOSE
Standard Fibreglass	Traditional flyscreen mesh	Aluminium	Meets requirements for Bushfire Attack Level (BAL) Ratings between 12.5 and 29
Mini-Weave	Extra protection against tiny insects	Bronze	Mostly used in traditional or period style homes
Visibility Plus	Designed with greater transparency for million dollar views	Stainless Steel	Meets requirements for BAL Ratings up to 40
Enclosure Plus	High strength mesh well suited to larger areas		
UV Guard 90	90% UV blockout from the sun's harsh rays and to protect internal furnishings from fading		

All mesh is black or charcoal in colour to absorb the light and make it easier to see through.

STANDARD FIBREGLASS

Sometimes called Nylon mesh, this is the most common type of mesh found in flyscreen windows across Australia.



- ✓ **DOESN'T KINK OR DENT**
Can be pulled very tight across a screen for optimal visibility and flat presentation
- ✓ **VERSATILE**
Suits almost all types of door or window frames
- ✓ **AFFORDABLE**
Cheapest and easiest to replace (ie, DIY from Bunnings etc)
- ✓ **VISIBILITY**
Allows good 2 way visibility
- ✗ **DURABILITY**
Will not rust, rot, shrink or stain. However can be torn by pets, kids etc
- ✓ **EASY TO REPLACE**

Technical Details:
PVC coated fibreglass mesh, 0.25mm diameter yarn, 18 x 14 strands per inch

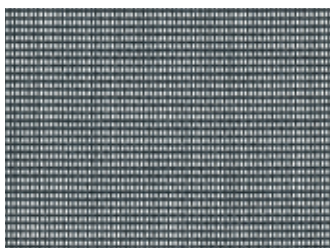
Strength Rating:



Comes standard in our Flydoors, Diamond Grille Doors, Decorative Aluminium Security Doors

MINI-WEAVE

Ideal for use where extra protection is needed against very small midge insects or sand flies. Popular in coastal areas or Queensland.



- ✓ **DOESN'T KINK OR DENT**
Can be pulled very tight across a screen for optimal visibility and flat presentation
- ✓ **VERSATILE**
Suits almost all types of door or window frames
- ✓ **KEEPS INSECTS OUT**
Even the very small ones
- ✗ **DURABILITY**
Will not rust, rot, shrink or stain. However can be torn by pets, kids etc
- ✓ **EASY TO REPLACE**

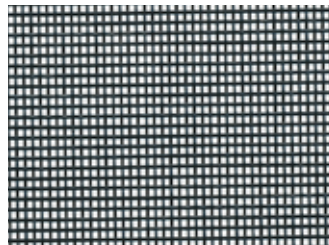
Technical Details:
PVC coated fibreglass mesh, 0.25mm diameter yarn, 18 x 30 strands per inch

Strength Rating:



ENCLOSURE PLUS

Manufactured from hard-wearing polyester, Enclosure Plus offers high strength screening for windows located in high traffic areas or where pet's claws are a problem. The perfect choice for really big windows as most other mesh requires a join.



- ✓ **DOESN'T KINK OR DENT**
Can be pulled very tight across a screen
- ✓ **VERSATILE**
Suits almost all types of door or window frames
- ✓ **SUITABLE FOR LARGE AREAS**
Can be fitted to very large doors without needing to join
- ✓ **DURABILITY**
It's strong, flexible, pliable and will not rust, rot, shrink or stain, resistant to pet claws & kids

EASY TO REPLACE

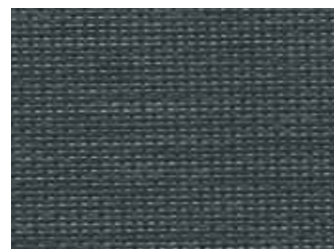
Technical Details:
High strength PVC coated Polyester, 0.35mm diameter yarn, 16 x 14 strands per inch

Strength Rating:



UV GUARD 90

Designed for screening windows where extra protection from the sun's harsh UV rays is required. Helps to protect internal furnishings from fading in the sun.



- ✓ **DOESN'T KINK OR DENT**
Can be pulled very tight across a screen for optimal visibility
- ✓ **VERSATILE**
Suits almost all types of door or window frames
- ✓ **90% UV BLOCKOUT**
- ✓ **VISIBILITY**
Good outward visibility through the screen but improves daytime privacy inwards
- ✗ **DURABILITY**
Surprisingly durable, however can be torn by pets, kids etc
- ✓ **EASY TO REPLACE**

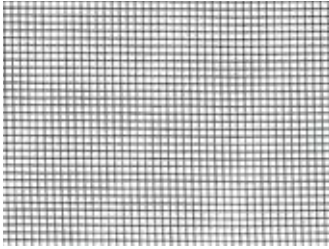
Technical Details:
PVC coated fibreglass mesh, 0.33mm diameter yarn, 20 x 30 strands per inch

Strength Rating:



VISIBILITY PLUS

Designed for windows where excellent visibility and airflow is required. If you have a million dollar view this is the mesh for you!



- ✓ **DOESN'T KINK OR DENT**
Can be pulled very tight across a screen for optimal visibility
- ✓ **VERSATILE**
Suits almost all types of door or window frames
- ✓ **15% MORE VISIBILITY**
than standard fibreglass mesh
- ✓ **15% MORE AIRFLOW**
than standard fibreglass mesh
- ✗ **DURABILITY**
Will not rust, rot, shrink or stain. However can be torn by pets, kids etc
- ✓ **EASY TO REPLACE**

Technical Details:

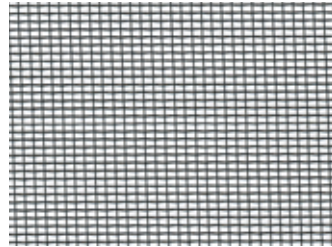
PVC coated fibreglass mesh, 0.18mm diameter yarn, 18 x 18 strands per inch

Strength Rating:



ALUMINIUM

A mesh that balances durability and visibility, and most importantly meets requirements in Bushfire zones where metal based mesh screens are required.



- ✓ **BUSHFIRE ATTACK LEVEL RATED**
Meets government requirements for building standards in areas with Bushfire Attack Level (BAL) Ratings between 12.5 & 29
- ✓ **VISIBILITY**
Good two way visibility
- ✗ **CAN KINK OR DENT**
Is fitted tight across frame however appears wavy and can kink because made of metal wire which doesn't stretch at all

Technical Details:

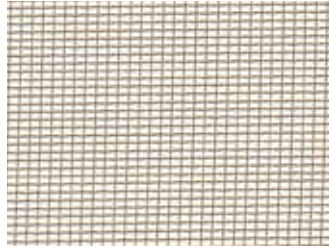
Aluminium baked enamel finish, 0.23mm diameter wire, 18 x 16 strands per inch

Strength Rating:



BRONZE

Ideal for rejuvenating windows in traditional or period style homes. Precision woven, using the highest quality materials, Bronze offers great strength and durability. Bronze is highly suitable for tough and demanding conditions.



- ✓ **DESIGNED FOR PERIOD STYLE HOMES**
Matches existing screens on many period style homes
- ✓ **BUSHFIRE ATTACK LEVEL RATED**
Meets government requirements for building standards in areas with Bushfire Attack Level (BAL) Ratings up to 40
- ✓ **VISIBILITY**
Good two way visibility
- ✗ **CAN KINK OR DENT**
Is fitted tight across frame however appears wavy and can kink because made of metal wire which doesn't stretch at all

Technical Details:

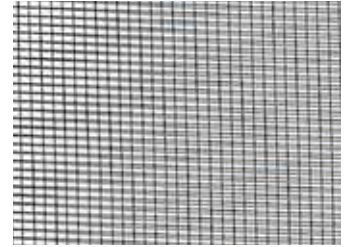
PVC coated fibreglass mesh, 0.33mm diameter yarn, 20 x 30 strands per inch

Strength Rating:



STAINLESS STEEL (FLYWIRE)

For screening windows and doors in the harshest conditions. Non security.



- ✓ **BUSHFIRE ATTACK LEVEL RATED**
Meets government requirements for building standards in areas with Bushfire Attack Level (BAL) Ratings up to 40
- ✓ **VISIBILITY**
Fine mesh for good visibility
- ✓ **CORROSION RESISTANT**
Perfect for coastal environments
- ✗ **CAN KINK OR DENT**
Is fitted tight across frame however appears wavy and can kink because made of metal wire which doesn't stretch at all

Technical Details:

316 Marine Grade Stainless steel (tbc), 0.18mm diameter wire, 18 x 16 strands per inch

Strength Rating:



Note: This mesh is different to the stainless steel mesh used in INVISI-GARD doors which are made of sheets of stainless steel wire rather than a flexible roll such as this.



WINDOW SCREENS COLOURS

All our doors come in a wide selection of colours to suit your taste and style of house.

COLOURS

All our window screens come in a wide selection of colours to suit your taste and style of house.

STANDARD COLOURS

All our window screens come in a wide selection of colours to suit your taste and style of house. Choose from any of our standard colours below for your window screens.

POWDER COAT COLOURS

High quality thermostatically applied dry powder paint applied to create a smooth hard finish that is tougher than regular paint. Highly resistant to chipping.



IMPORTANT NOTE: Printed or on-screen representations of colours are very difficult to replicate exactly. Our technicians carry samples of our standard colours on actual metal samples to all measure & quotes so you can see the finished product and choose the best colour for you.

ANODISED FINISH

Like powder coating, anodizing is a process that makes the surface corrosion and wear-resistant. These 2 colours are also available as standard colours on our Aluminium framed doors.



SPECIAL COLOURS

A selection of the next most popular colours, the 8 special colours are available for a small extra charge.



CUSTOM COLOURS

We can custom make with any colour in the **Dulux Powder Coat Range** (www.duluxpowders.com.au) or **Interpon Powder Coat Range** (www.interpon.com.au). These are powder coated to order locally by our specialist sub-contracting metal finishers and incur an additional charge and approximately 10 days additional manufacturing time.

Custom paint colour matching service available



IMPORTANT NOTE: Printed or on-screen representations of colours are very difficult to replicate exactly. Our technicians carry samples of our standard colours on actual metal samples to all measure & quotes so you can see the finished product and choose the best colour for you.

WINDOW SCREENS ATTACHMENTS

A variety of attachments are used by our expert tradespeople to ensure your window screens attach securely to your window.

ATTACHMENTS

A variety of attachments are used by our expert tradespeople to ensure your window flyscreen attaches securely to your window. We choose the best option for your windows based on their construction. Our aim is to provide a secure attachment with the least obtrusive appearance.

These attachments are provided as **STANDARD** on all window screens.

PLUNGER PINS

Fitted through the flyscreen frame and extending into a small hole drilled into the window frame.

They hold the screen in place by extending into window frame and are easily retracted when the screen needs to be removed.



Spring loaded metal ones are available at extra cost.

SWIVEL CLIPS

These are screwed onto the window frame and hold the screen in place and can easily be swivelled to allow easy screen removal.



Metal versions are available at extra cost.

CLIPS

Attached to the Flyscreen frame these clips provide good grip for easy removal of the flyscreen, Usually used on Bradnam windows.



BUTTONS

Used on some screens as an alternative to pins. Can be fitted to either the top or bottom of screen and provide grip for easy removal of the flyscreen. Not suitable for most windows.



HINGES

Used where it is necessary to create a moving screen (ie. Casement windows where it is often necessary to move the screen to open the window). These hinges are unobtrusive and are fitted snugly against frame to optimise tight seal.

Metal versions are available at extra cost.



ATTACHMENTS (ADDITIONAL COST)

Depending on the construction and configuration of your windows it is sometimes necessary to utilise additional attachments shown below.

These have a **SMALL COST** associated with supply and fitting.

TAIL PIECE

Used where a suitable rail isn't built over or beside the window winder on one of the most commonly occurring window types in Australia (Awning windows).

Our standard 'Tail Piece' is attached as a press-fit to the bottom of the flyscreen. It is custom cut to size to ensure optimal fit over window winder.

Comes in all of our standard colours and will be matched to your selected frame colour



CHANNELS

Often used for Double Hung (or Sash) windows these channels enable the flyscreen to be fitted with a good seal. The channels help hide gaps created by old, out of square window frames on older houses (which often have double hung windows).



TRACKS

Typically used on horizontal sashless sliding windows. Allows us to make screen slide out of the way, so you can operate the glass, then move the screen back to cover the opening. Top channel is deeper so the screen goes high up into it, then drops into the shallow bottom channel without falling out of the top one.



If a window is particularly unique we can utilise other methods of attaching Screens or design a custom attachment system for a small additional charge.



Bulleenscreens
made for the trade

PH: 03 9568 5568

office@bulleenscreens.com.au

www.bulleenscreens.com.au

Showroom: 8am to 4pm Monday to Friday
25 Edward Street, Oakleigh,
Victoria, Australia, 3166