

# DOOR SCREENS **MESH OPTIONS**

All our doors come with an appropriate insect mesh already fitted – however we have plenty of alternative meshes available as an upgrade to suit your particular needs.

# MESH OPTIONS

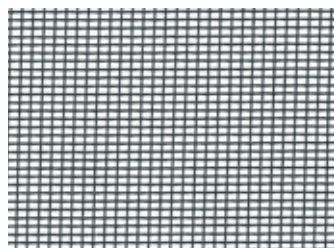
All our doors come with an appropriate insect mesh already fitted – however we have plenty of alternative meshes available as an upgrade to suit your particular needs.

FABRIC MESH TYPES	REASON TO CHOOSE	METAL MESH TYPES	REASON TO CHOOSE
<b>Standard Fibreglass</b>	Traditional flyscreen mesh	<b>Aluminium</b>	Meets requirements for Bushfire Attack Level (BAL) Ratings between 12.5 and 29
<b>Mini-Weave</b>	Extra protection against tiny insects	<b>TuffScreen</b>	High strength mesh that also meets requirements for BAL Ratings between 12.5 and 29
<b>Visibility Plus</b>	Designed with greater transparency for million dollar views	<b>DVA One Way Vision</b>	Delivers extra privacy as it makes seeing in from the outside more difficult
<b>Enclosure Plus</b>	High strength mesh well suited to larger areas	<b>Bronze</b>	Mostly used in traditional or period style homes
<b>Paw</b>	High strength mesh resistant to pet's claws and kids	<b>Stainless Steel</b>	Meets requirements for BAL Ratings up to 40
<b>UV Guard 90</b>	90% UV blockout from the sun's harsh rays and to protect internal furnishings from fading		

All mesh is black or charcoal in colour to absorb the light and make it easier to see through.

## STANDARD FIBREGLASS

Sometimes called Nylon mesh, this is the most common type of mesh found in flyscreen doors across Australia. It is fibreglass strands coated in PVC.



- ✓ **DOESN'T KINK OR DENT**  
Can be pulled very tight across a screen for optimal visibility and flat presentation
- ✓ **VERSATILE**  
Suits almost all types of door or window frames.
- ✓ **AFFORDABLE**  
Cheapest and easiest to replace (ie, DIY from Bunnings etc)
- ✓ **VISIBILITY**  
Allows good 2 way visibility
- ✗ **DURABILITY**  
Will not rust, rot, shrink or stain. However can be torn by pets, kids etc
- ✓ **EASY TO REPLACE**

**Technical Details:**  
PVC coated fibreglass mesh, 0.25mm diameter yarn, 18 x 14 strands per inch

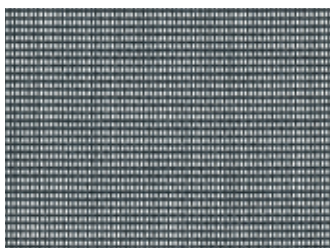
### Strength Rating:



Comes standard in our Flydoors, Diamond Grille Doors, Decorative Aluminium Security Doors

## MINI-WEAVE

Ideal for use where extra protection is needed against very small midge insects or sand flies. Popular in coastal areas or Queensland.



- ✓ **DOESN'T KINK OR DENT**  
Can be pulled very tight across a screen for optimal visibility and flat presentation
- ✓ **VERSATILE**  
Suits almost all types of door or window frames
- ✓ **KEEPS INSECTS OUT**  
Even the very small ones
- ✗ **DURABILITY**  
Will not rust, rot, shrink or stain. However can be torn by pets, kids etc
- ✓ **EASY TO REPLACE**

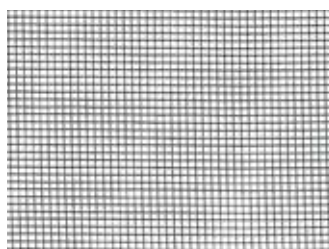
**Technical Details:**  
PVC coated fibreglass mesh, 0.25mm diameter yarn, 18 x 30 strands per inch

### Strength Rating:



## VISIBILITY PLUS

Designed for doors where excellent visibility and airflow is required. If you have a million dollar view this is the mesh for you! It tricks your eyes to look like glass



- ✓ **DOESN'T KINK OR DENT**  
Can be pulled very tight across a screen for optimal visibility
- ✓ **VERSATILE**  
Suits almost all types of door or window frames
- ✓ **15% MORE VISIBILITY**  
than standard fibreglass mesh
- ✓ **15% MORE AIRFLOW**  
than standard fibreglass mesh
- ✗ **DURABILITY**  
Will not rust, rot, shrink or stain. However can be torn by pets, kids etc
- ✓ **EASY TO REPLACE**

**Technical Details:**  
PVC coated fibreglass mesh, 0.18mm diameter yarn, 18 x 18 strands per inch

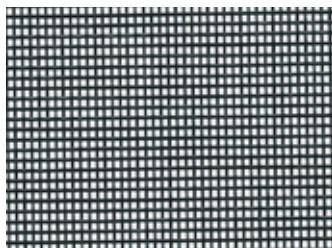
### Strength Rating:





## ENCLOSURE PLUS

Manufactured from hard-wearing polyester, Enclosure Plus offers high strength screening for doors located in high traffic areas or large screen doors where extra strength is required. The perfect choice for really big doors as most other mesh requires a join.



- ✓ **DOESN'T KINK OR DENT**  
Can be pulled very tight across a screen
- ✓ **VERSATILE**  
Suits almost all types of door or window frames
- ✓ **SUITABLE FOR LARGE AREAS**  
Can be fitted to very large doors without needing to join
- ✓ **DURABILITY**  
It's strong, flexible, pliable and will not rust, rot, shrink or stain, resistant to pet claws & kids

**EASY TO REPLACE**

### Technical Details:

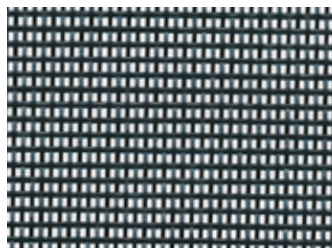
High strength PVC coated Polyester, 0.35mm diameter yarn, 16 x 14 strands per inch

### Strength Rating:

//////

## PAW MESH

Thicker, tougher mesh for screening doors and windows where pet's claws are a problem. For larger animals upgrade to a Hard PVC Spline (instead of standard rubber spline) which further strengthens the screen by making it tougher for the mesh to pull out from the frame



- ✓ **DOESN'T KINK OR DENT**  
Can be pulled very tight across a screen for optimal visibility
- ✓ **VERSATILE**  
Suits almost all types of door or window frames
- **VISIBILITY**  
Thicker strands and denser weave can make screens slightly harder to see through
- ✓ **DURABILITY**  
It's flexible, pliable and will not rust, rot, shrink or stain, resistant to pet claws & kids

**EASY TO REPLACE**

### Technical Details:

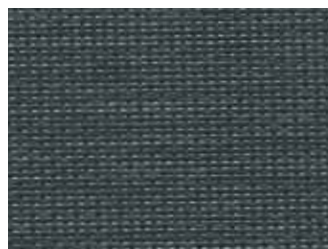
PVC coated heavy gauge Polyester mesh, 0.80mm diameter yarn, 15 x 11 strands per inch

### Strength Rating:

//////

## UV GUARD 90

Designed for screening doors and windows where extra protection from the sun's harsh UV rays is required. Improves daytime privacy without compromising view. Helps to protect internal furnishings from fading in the sun.



- ✓ **DOESN'T KINK OR DENT**  
Can be pulled very tight across a screen for optimal visibility
- ✓ **VERSATILE**  
Suits almost all types of door or window frames
- ✓ **90% UV BLOCKOUT**
- ✓ **VISIBILITY**  
Good outward visibility through the screen but improves daytime privacy inwards
- ✗ **DURABILITY**  
Surprisingly durable, however can be torn by pets, kids etc
- ✓ **EASY TO REPLACE**

### Technical Details:

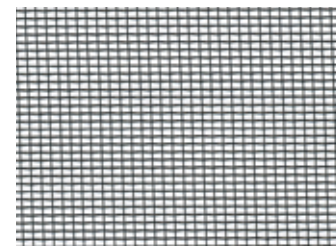
PVC coated fibreglass mesh, 0.33mm diameter yarn, 20 x 30 strands per inch

### Strength Rating:

//////

## ALUMINIUM

A mesh that balances durability (though low strength) and visibility, and most importantly meets requirements in Bushfire zones where metal based mesh screens are required.



- ✓ **BUSHFIRE ATTACK LEVEL RATED**  
Meets government requirements for building standards in areas with Bushfire Attack Level (BAL) Ratings between 12.5 & 29
- ✓ **VISIBILITY**  
Good two way visibility
- ✗ **CAN KINK OR DENT**  
Is fitted tight across frame however appears wavy and can kink because made of metal wire which doesn't stretch at all

### Technical Details:

Aluminium baked enamel finish, 0.23mm diameter wire, 18 x 16 strands per inch

### Strength Rating:

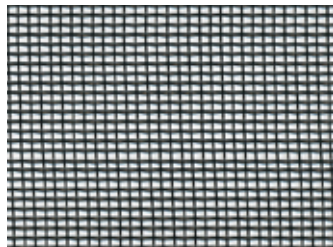
//////

## HARD PVC SPLINE

Gripping the mesh tighter on the frame so it can withstand more force, hard PVC Spline can be fitted to any screen with Enclosure Plus, Paw Mesh or UV Guard 90 Mesh. Will increase the strength rating by +// (2).

## TUFFSCREEN

Ideal for screening security doors this mesh has extra durability and is designed for areas that take a beating.



- ✓ **HIGHLY DURABLE**
- ✓ **SUPER THICK WIRE DIAMETER**  
Good for areas where pets or kids are likely to push on the door/window
- ✓ **BUSHFIRE ATTACK LEVEL RATED**  
Meets government requirements for building standards in areas with Bushfire Attack Level (BAL) Ratings between 12.5 & 29
- ✗ **VISIBILITY**  
Strands are thicker and closer together however still provides good transparency
- ✗ **CAN KINK OR DENT**  
Is fitted tight across frame however appears wavy and can kink because made of metal wire which doesn't stretch at all

### Technical Details:

Powder coated aluminium, 0.41mm diameter wire, 14 x 14 strands per inch

### Strength Rating:



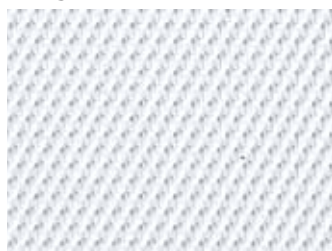
## DVA ONE WAY VISION MESH

When fitted to a door, it makes seeing in from the outside much more difficult than seeing out from the inside.

It doesn't totally block vision – just obscures it. Works best in light colours.

At night, when the lights are on inside, the effectiveness is reduced (ie. People can see in more easily).

The mesh holes by themselves are too big to be an insect mesh, so a layer of standard fibreglass mesh is fitted.



- ✓ **PRIVACY**  
Increases privacy when main door is open. Can see out but people cannot easily see in
- ✗ **CAN KINK OR DENT**  
Is fitted tight across frame however appears wavy and can kink because made of metal wire which doesn't stretch at all
- **VISIBILITY**
- ✓ **COLOUR RANGE**

### Technical Details:

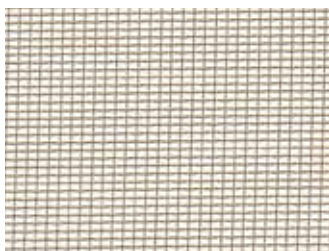
Flat sheet of aluminium, with punched and expanded holes. Fitted with standard fibreglass mesh inside.

### Strength Rating:



## BRONZE

Ideal for rejuvenating windows and doors in traditional or period style homes. Precision woven, using the highest quality materials, Bronze offers great strength and durability. Bronze is highly suitable for tough and demanding conditions.



- ✓ **DESIGNED FOR PERIOD STYLE HOMES**  
Matches existing screens on many period style homes
- ✓ **BUSHFIRE ATTACK LEVEL RATED**  
Meets government requirements for building standards in areas with Bushfire Attack Level (BAL) Ratings up to 40
- ✓ **VISIBILITY**  
Good two way visibility
- ✗ **CAN KINK OR DENT**  
Is fitted tight across frame however appears wavy and can kink because made of metal wire which doesn't stretch at all

### Technical Details:

PVC coated fibreglass mesh, 0.33mm diameter yarn, 20 x 30 strands per inch

### Strength Rating:



## STAINLESS STEEL (FLYWIRE)

For screening windows and doors in the harshest conditions. Non security.



- ✓ **BUSHFIRE ATTACK LEVEL RATED**  
Meets government requirements for building standards in areas with Bushfire Attack Level (BAL) Ratings up to 40
- ✓ **VISIBILITY**  
Fine mesh for good visibility
- ✓ **CORROSION RESISTANT**  
Perfect for coastal environments
- ✗ **CAN KINK OR DENT**  
Is fitted tight across frame however appears wavy and can kink because made of metal wire which doesn't stretch at all

### Technical Details:

316 Marine Grade Stainless steel (tbc), 0.18mm diameter wire, 18 x 16 strands per inch

### Strength Rating:



**Note:** This mesh is different to the stainless steel mesh used in INVISI-GARD doors which are made of sheets of stainless steel wire rather than a flexible roll such as this.

# DOOR SCREENS COLOURS

All our doors come in a wide selection of colours to suit your taste and style of house.

# COLOURS

All our doors come in a wide selection of colours to suit your taste and style of house.

## STANDARD COLOURS

Choose from any of our standard colours below for your Aluminium Frame door – this includes any Flyscreen, Diamond Grille, Decorative Aluminium or Contemporary Door (including INVISI-GARD). Our technicians carry samples of our standard colours to all measure & quotes so you can see the finished product and choose the best colour for you.

## POWDER COAT COLOURS

High quality thermostatically applied dry powder paint applied to create a smooth hard finish that is tougher than regular paint. Highly resistant to chipping.



**IMPORTANT NOTE:** Printed or on-screen representations of colours are very difficult to replicate exactly. Our technicians carry samples of our standard colours on actual metal samples to all measure & quotes so you can see the finished product and choose the best colour for you.

## ANODISED FINISH

Like powder coating, anodizing is a process that makes the surface corrosion and wear-resistant. These 2 colours are also available as standard colours on our Aluminium framed doors.



## SPECIAL COLOURS

A selection of the next most popular colours, the 9 special colours are available for a small extra charge. On any Steel Security Door special colours are included without any extra cost.



## CUSTOM COLOURS

We can custom make with any colour in the **Dulux Powder Coat Range** ([www.duluxpowders.com.au](http://www.duluxpowders.com.au)) or **Interpon Powder Coat Range** ([www.interpon.com.au](http://www.interpon.com.au)). These are powder coated to order locally by our specialist sub-contracting metal finishers and incur an additional charge and approximately 10 days additional manufacturing time.

**Custom paint colour matching service available**



**IMPORTANT NOTE:** Printed or on-screen representations of colours are very difficult to replicate exactly. Our technicians carry samples of our standard colours on actual metal samples to all measure & quotes so you can see the finished product and choose the best colour for you.



# DOOR SCREENS ACCESSORIES

All our doors are fixed with high quality standard accessories to ensure they function as intended. We also have a range of optional upgrades to our standard accessories.



# ACCESSORIES

## ACCESSORIES – LOCKS

### HINGED DOORS

All our hinged doors come fitted with an Austral Elegance XC door handle with keylock. This enables the door to be locked from inside or outside with a key.

Includes an interior snib lever for quick and convenient locking from the inside without the need for a key.

**Available in a wide range of colours.**

**Australian design and manufacture.**

**Other quality brands available upon request.**



### SLIDING SECURITY DOORS

#### STANDARD

All our sliding **Diamond Grille**, **Decorative**, **Contemporary** and **INVISI-GARD** doors come fitted with an **Austral SD7** sliding door lock.

This enables the door to be locked from inside or outside with a key. Includes an interior snib lever (shown on right) for quick and convenient locking from the inside without the need for a key. Self-latching lock bolt engages automatically when the door is closed.



SD7 OUTSIDE SD7 INSIDE

#### OPTIONAL UPGRADE

As an optional upgrade for sliding doors the **Austral SD8** lock can be fitted. It provides all the same features of the **SD7** lock with a more contemporary and slimline appearance. In addition the fixing screws are only accessible from the inside, giving increased security.

**Available in 6 standard colours including black and white**



SD8 INSIDE

**Australian design and manufacture.**

**Other quality brands available upon request for extra charge.**

### SLIDING FLYSCREEN DOORS

#### STANDARD

All our sliding Flyscreen doors come fitted with a pull handle fitted to both the inside and outside of the door.



FLYSCREEN DOOR PULL HANDLE

#### OPTIONAL UPGRADE

As an optional upgrade any sliding Flyscreen door can be fitted with a snib.

This handle enables the door to be snibbed from the inside. Note: no snib function from the outside.



FLYSCREEN DOOR SNIB HANDLE

# ACCESSORIES

## ACCESSORIES – LOCKS

### TRIPLE LOCK

For extra security as an optional upgrade, a triple lock mechanism can be fitted to our hinged or sliding doors. This offers added security protection by locking 3 positions into the door frame when you use the key or snib lock.

**Note that if there is 'movement' in your house (as is quite common) these triple locks can go out of alignment and become unreliable.**



### KEYING ALIKE

In most cases we can match the keys of the door we fit to the existing one/s in your house. We can advise the easiest and most cost effective way to achieve this result.



## ACCESSORIES – HINGES

### HINGES

All our hinged doors come fitted with 2 regular hinges and our INVISI-GARD doors come fitted with 3 regular hinges.

Regular hinges are powder coated to match the frame of the door (15 standard colours) or provided in black.

As an optional upgrade stainless steel hinges are available in black or steel. This should be considered in salty areas 5-10km from the beach.



# ACCESSORIES

## ACCESSORIES – CLOSERS

### DOOR CLOSER HINGED DOORS

All our hinged doors come fitted standard with a **Austral** pneumatic door closer.

This allows the door to close automatically but not slam. All closures have an adjustment screw which allows you to easily adjust the force with which the door pulls closed using a screwdriver.

All our stainless steel hinged doors come fitted with a **heavy duty Austral** pneumatic door closer.

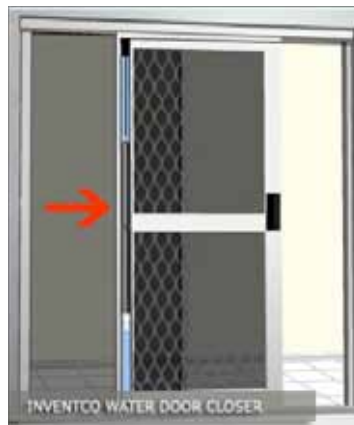


### DOOR CLOSER SLIDING DOORS (OPTIONAL UPGRADES)

Sliding doors do NOT come with a door closer however as an **optional upgrade** there are 2 options for automatic closers.

#### INVENTCO WATER CLOSER

- A self closing mechanism for sliding doors.
- Great for those who were “born in a tent” and forget to close the door behind themselves.
- Works using:
  - A weight inside a tube which is attached to the door frame.
  - The weight is lifted by a fishing line attached to the main door when the sliding door is opened.
  - The weight then pushes the door shut when released.
  - The water inside the tube cushions the impact and slows the speed of the movement, reducing risk to fingers.
  - Available in 10 colours.



#### PNEUMATIC NEW STAR CLOSER

- Similar to the Water Closer, but this one works with pneumatics and a telescopic retracting rod.
- Available in black/white only.





# ACCESSORIES

## ACCESSORIES – PET DOORS

### PLASTIC PET DOORS

Our basic pet door suitable for 'well mannered' pets.

Available in 2 sizes.

Small: 240mm high x 190mm wide (opening)

Large: 400mm high x 260mm wide (opening)



### ALUMINIUM PET DOORS

Our heavy duty pet doors also available in 2 sizes.

Small: 200mm Wide x 305mm High (opening)

Large: 300mm Wide x 440mm High (opening)



## ACCESSORIES – TRACKS (SLIDING DOORS ONLY)

We have a range of tracks that can be fitted as required to ensure smooth operation of our sliding doors.



**Bulleenscreens**  
made for the trade

**PH:** 03 9568 5568

[office@bulleenscreens.com.au](mailto:office@bulleenscreens.com.au)

[www.bulleenscreens.com.au](http://www.bulleenscreens.com.au)

**Showroom:** 8am to 4pm Monday to Friday  
25 Edward Street, Oakleigh,  
Victoria, Australia, 3166